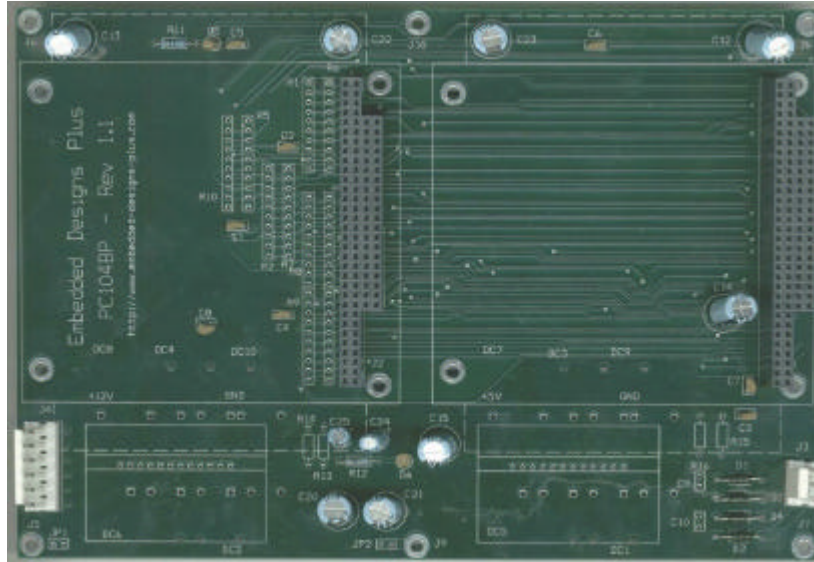


Embedded Designs Plus PC104 Dual Slot Back Plane Board (PC104BP)



Feature Highlights

- Suitable for compact applications
- Dual 16 Bit PC104 Slots
- High Efficiency 5 Volt and 12 Volt DC to DC Converters

Specifications

Input Voltage

- 24 VDC (16 VDC - 32 VDC)
- 24 VAC (16 VAC - 32 VAC peak to peak)

Output Voltage & Current

- 5 VDC @ 2.5 Amps
- 12 VDC @ 1 Amps

Physical Dimensions

- 5.75"(L) x 8.00"(W)

PC/104

- Dual 16 Bit PC104 connector for expansion modules

Interface Connectors

- Input Supply - Pin 1 and Pin 3 of J3
- Output Supply (ground) - Pin 3,4 and 5 of J4
- Output Supply (5 volts) - 1 & 2 of J4
- Output Supply (12 volts) - 6 of J4

Environmental Information

- Operating temperatures: 0~60°C
- Storage temperatures: -20~80°C
- Relative humidity: 10~90% non-condensing

Please refer to part number PC104BP when ordering

Embedded Designs Plus

HC88

Forestgrove, MT 59441

(406) 428-2108 p

(406) 428-2109 f

<http://www.embedded-designs-plus.com>